

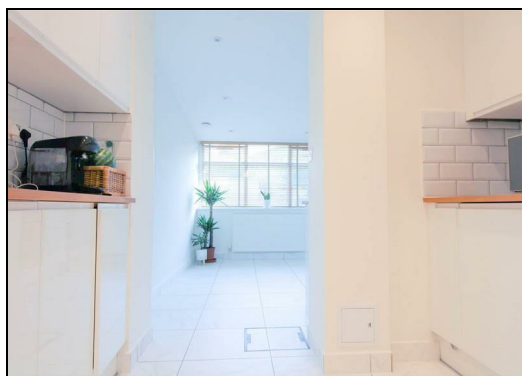


Barton Road, Maidstone ME15 7BX

£1,500 Per Calendar Month

CR Real Estate are delighted to offer to the market this beautifully presented three bedroom family home, located a short distance from Maidstone town centre.

This property boasts two large reception rooms, a high spec modern kitchen and conservatory to the rear. The first floor benefits from three bedrooms and a modern family bathroom. Externally, this property offers a garage, off road parking with driveway and garden to the rear.



Entrance Hall

Double Glazed Door To Front, Double Glazed Window To Front, Carpet, Carpeted Stairs To First.

Reception One

14'03 x 12'08 (4.34m x 3.86m)

Double Glazed Bay Window To Front, Hard Wood Flooring, Feature Inset Gas Fire, Smoothed Ceiling, Double Radiator.

Reception Two

12'02 x 10'07 (3.71m x 3.23m)

Double Glazed Window To Rear, Double Glazed Door To Rear, Carpet, Smoothed Ceiling, Feature Fireplace With Gas Fire.

Kitchen

21'05 x 8'06 (6.53m x 2.59m)

Double Glazed Window To Rear, Tiled Floor, Matching Wall & Base Units With Worktop, Gas Hob, Stainless Steel Sink, Double Radiator, Wall Mounted Boiler Space For Washing Machine.

Landing

Carpet, Access To Loft.

Bedroom One

12'03 x 12'07 (3.73m x 3.84m)

Double Glazed Window To Rear, Carpet, Double Radiator, Built In Storage Cupboard.

Bedroom Two

12'08 x 11'04 (3.86m x 3.45m)

Double Glazed Window To Front, Carpet, Single Radiator, Picture Rail, Smoothed Ceiling.

Bedroom Three

7'10 x 7'00 (2.39m x 2.13m)

Double Glazed Window To Front, Single Radiator, Carpet, Picture Rail, Smoothed Ceiling.

Bathroom

Frosted Double Glazed Window To Rear, Tiled Floor, Part Tiled Walls, Low Level WC, Panelled Bath With Wall Mounted Shower, Wall Mounted Sink, Smoothed Ceiling.

Conservatory

Double Glazed Conservatory To Rear.

Rear Garden

approx 60' (approx 18.29m)

Paved Patio, Laid to Lawn Area,

